





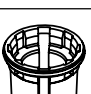

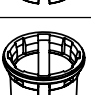
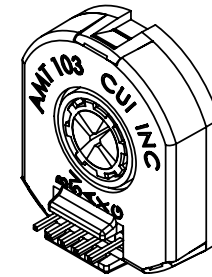
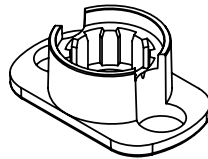
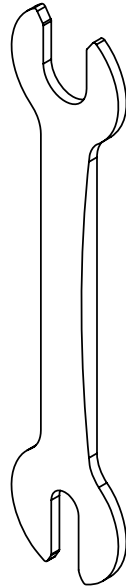
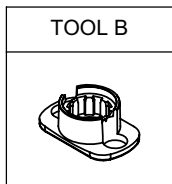
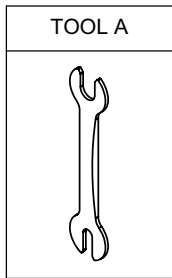
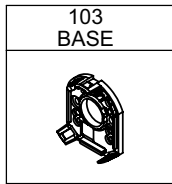
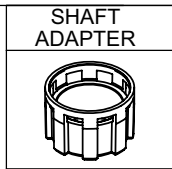
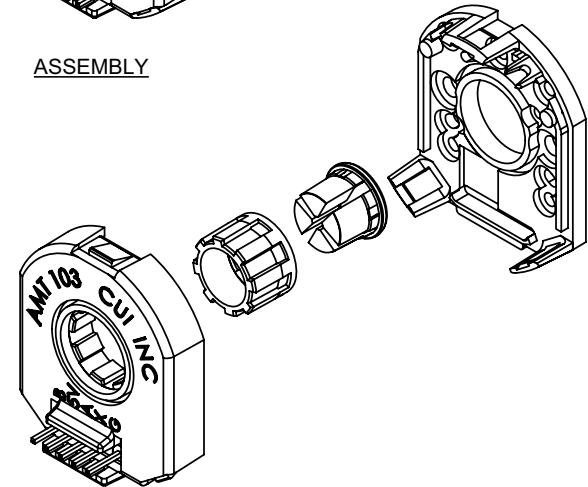


SLEEVES	
	2mm Light Sky Blue
	3mm Orange
	1/8 inch (3.175mm) Purple1
	4mm Gray60
	3/16 inch (4.76mm) Yellow1
	5mm Green1
	6mm Red1
	1/4 inch (6.35mm) Snow
	8mm Blue



ASSEMBLY



PIN-OUT	
PIN	DESCRIPTION
B	B CHANNEL
5V	+5VDC POWER
A	A CHANNEL
X	INDEX OUPUT
G	GROUND

MATING CONNECTOR
AMP 3-640441-5

CABLES AVAILABLE
(SOLD SEPERATELY)



AMT103 VersaPak comes with all items shown: all Sleeve sizes, Shaft Adapter, Base, Top Cover, Tool A, Tool B, Index Pulse, and 16 Resolution Dip Switch.

Sleeve Sizes

The AMT comes with sleeve adapters to fit the following bore diameters: 2mm, 3mm, 3.17mm (1/8"), 4mm, 4.76mm (3/16"), 5mm, 6mm, 6.35mm (1/4"), 8mm.

Operational Specs

3.6 Vdc~5.5Vdc
Temp Range: -40 ~ +100°C

Resolution Options (PPR)

All resolutions stated are before quadrature decoding (example: 1000PPR x 4 = 4000 counts).

Resolutions of AMT103 VersaPak = 48, 96, 100, 125, 196, 200, 250, 256, 384, 400, 500, 512, 800, 1000, 1024, 2048.

Max RPM

Max RPM	Resolutions
7500	2048, 1000, 800, 384 (plus res. from 15k and 30k RPM)
15000	1024, 500, 400, 192 (plus res. from 30k RPM)
30000	512, 250, 200, 96; 256, 125, 100, 48

Mounting Hole Options (see dim drawing for layout)

- 2 each M1.6 holes on 16mm (.63") bolt circle
- 2 each #4 holes on 19.05 (.75") bolt circle
- 2 each M1.6 or M2 holes on 20mm (.787") bolt circle
- 3 each M1.6 or M2 holes on 20.9mm (.823") bolt circle
- 3 each M1.6 or M2 holes on 22mm (.866") bolt circle
- 4 each M1.6 or M2 holes on 25.4mm (1") bolt circle

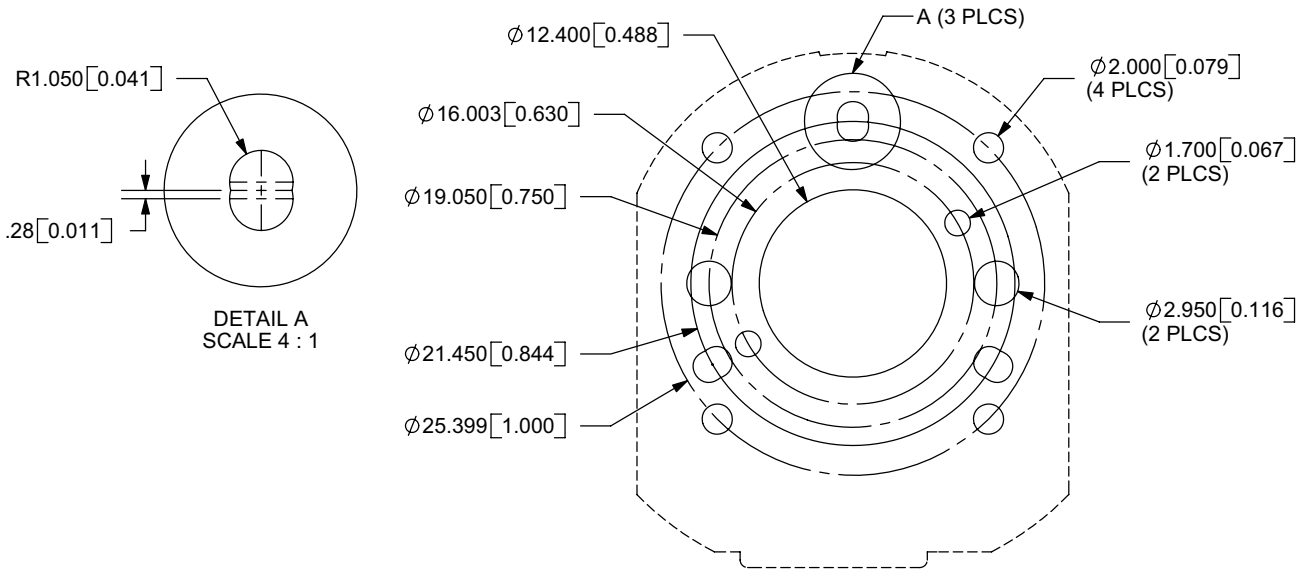
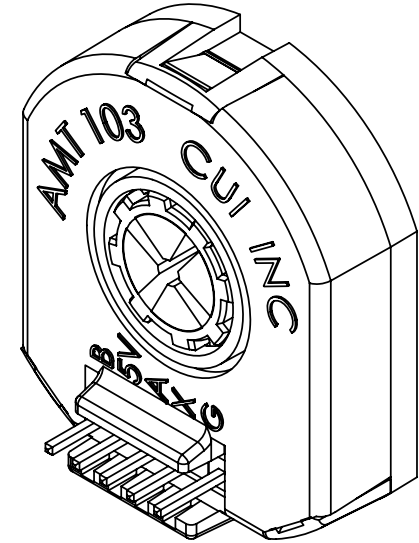
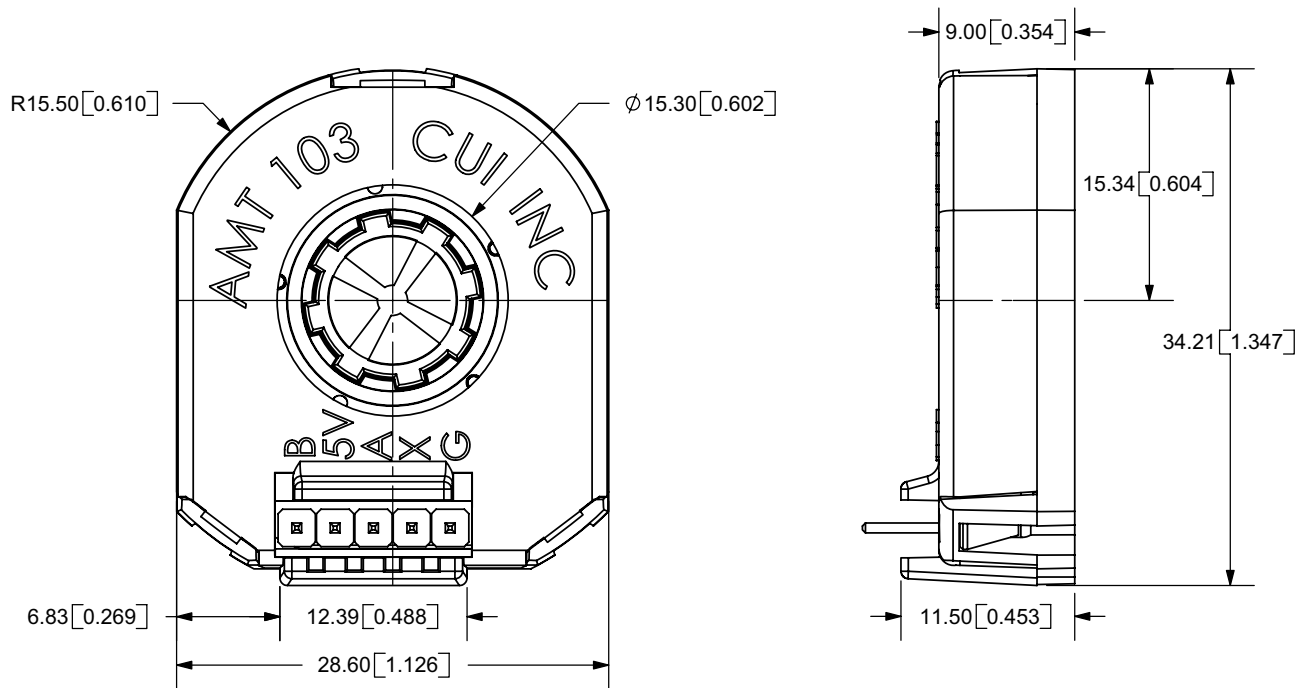
Note: If the magnet field is above 5 Gauss measured 2mm above the mounting surface for the encoder, the index may not function properly.

BOHEZ®

big enough to serve you,
small enough to know you

Klinkkouterstraat 52 - B-9040 Sint-Amandsberg - Belgium

TITLE: AMT103 VersaPak		REV: C
PART NO. AMT103-V		UNITS: MM [INCHES]
DRAWN BY: ZRJ	APPROVED BY:	SCALE: N/A



TOLERANCE:
 $\pm 0.05\text{mm}$ UNLESS OTHERWISE
 SPECIFIED



BOHEZ[®]

big enough to serve you,
 small enough to know you

Klinkouterstraat 52 - B-9040 Sint-Amandsberg - Belgium

TITLE: AMT103 DIMENSION DRAWING		REV: D
PART NO: AMT103	UNITS: MM [INCHES]	
DRAWN BY: ZRJ	APPROVED BY:	SCALE: 2:1